

--- Délimitation Surfaces Nettes (Valeur retenue pour l'Acte de Base)

■ LOT 1 = 71,14 m²

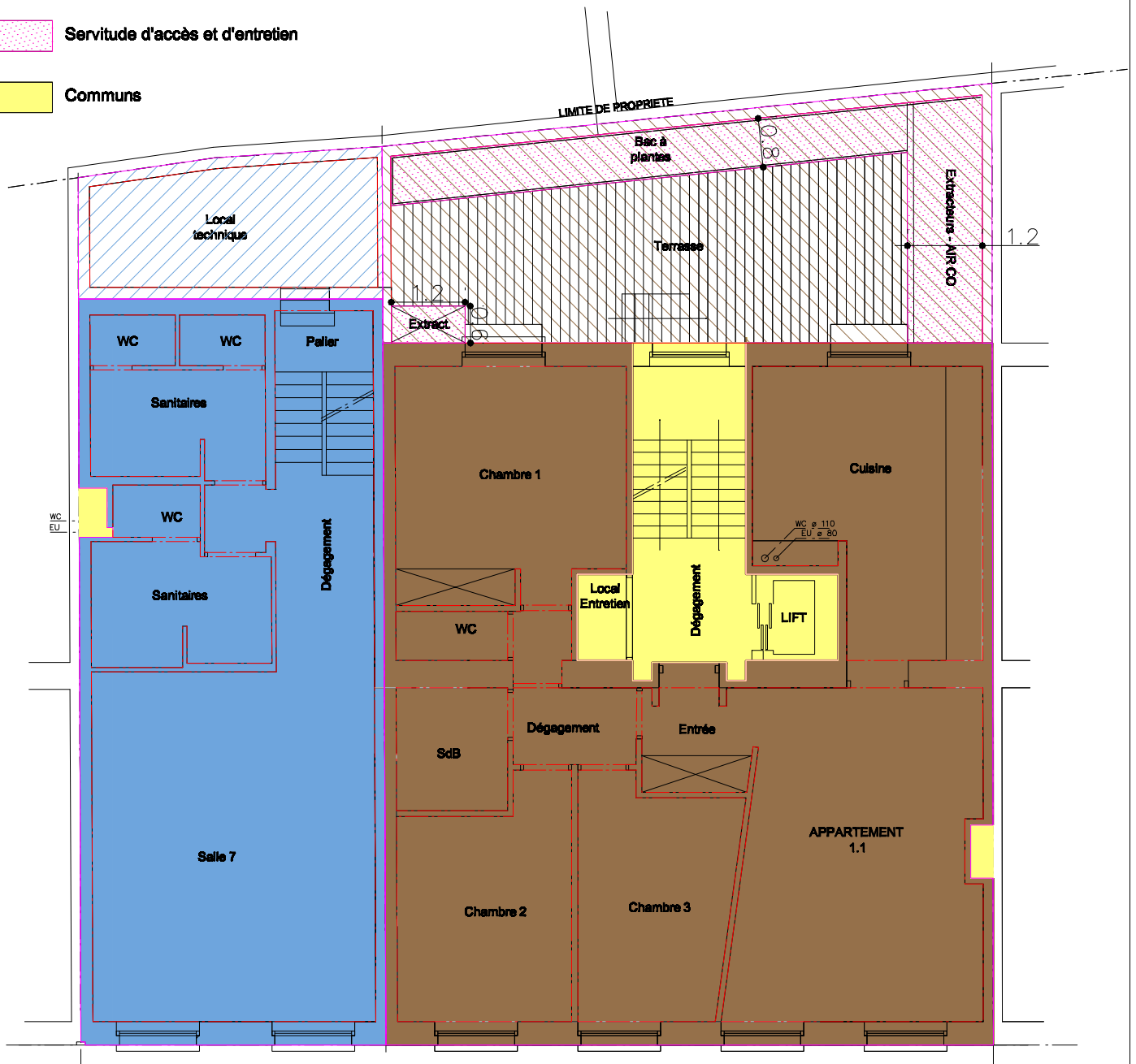
▨ local technique LOT 1 = 11,27 m²

■ LOT 2 = 99,72 m²

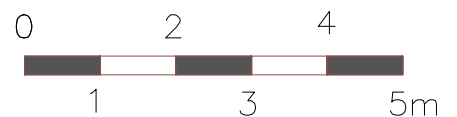
▨ terrasse LOT 1 = 36,85 m²

▨ Servitude d'accès et d'entretien

■ Communs



Echelle 1/100



Rue des Pretres n°4/6 - 1000 Bruxelles
NIVEAU +1